



## Dri-Eaz® Dehumidifier Command Hub Installation Instructions For i-Series Models (Except 2800i/3500i)

Legend Brands, Inc.

15180 Josh Wilson Road, Burlington, WA 98233

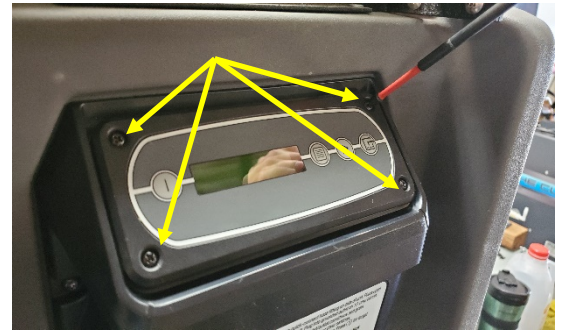
Phone: 800-932-3030 Fax: 360-757-7950 [LegendBrandsRestoration.com](http://LegendBrandsRestoration.com)

Find these instructions and more information on the Command Hub at [DehuCommandHub.LegendBrandsRestoration.com](http://DehuCommandHub.LegendBrandsRestoration.com)

### Step 1

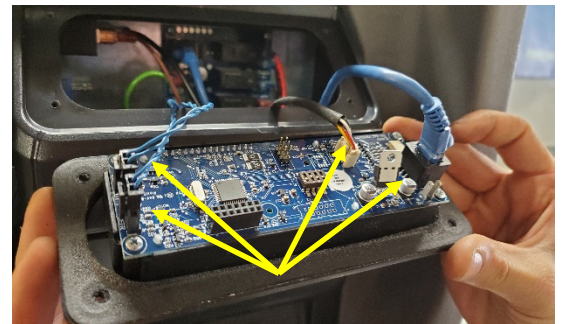
#### **Unplug or disconnect power to the dehumidifier.**

Using a #2 Philips screwdriver, remove the 4 mounting screws – set aside and save to secure the Command Hub.

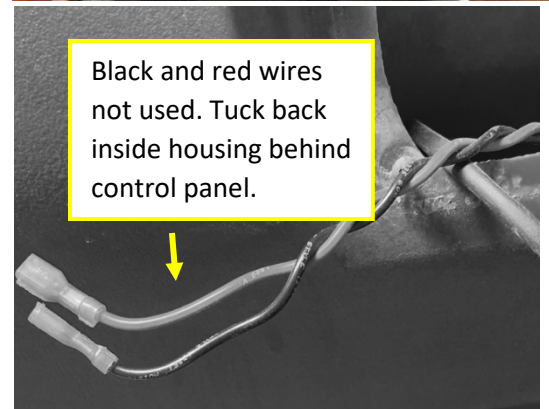


### Step 2

Lift out the old i-Series controller and remove the 4 cables from the back – 2 temp sensors, 1 data cable, and 1 temp/RH sensor.



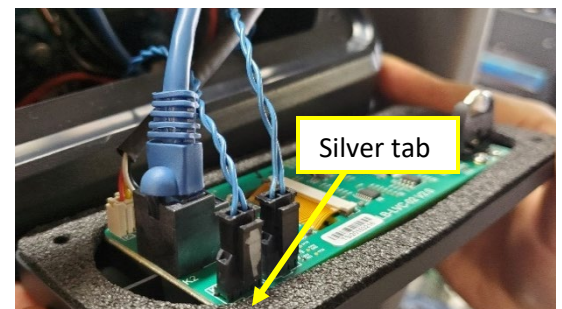
NOTICE: Certain older models may include a pair of red and black wires with spade connectors located inside the housing behind the control panel. These wires are not used with the Command Hub installation and should be tucked back inside the housing.



### Step 3

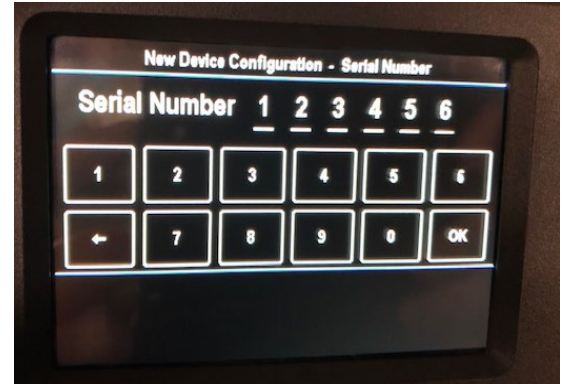
Connect the cables to the Command Hub controller as shown in photo at right. Take care not to tangle or twist the cables and ensure the controller is oriented correctly. Connect:

1. Temp/RH connector to K3/RH1 receptacle
2. Blue data cable to K2 socket
3. Defrost temp sensor – silver tab to K5/DEF receptacle
4. Outlet temp sensor to K6/Out receptacle



## Step 4

Place the Command Hub into position and, to avoid stripping mounting holes, **hand-tighten** the 4 screws that were removed from the old i-Series controller in Step 1. Once the Command Hub is secured to the dehumidifier, plug in the unit. The first Config screen will display after a brief start-up cycle. Enter the serial number of the dehumidifier from the serial label on the unit. Six (6) digits are required; if the serial number is less than 6 digits, add zeros (0) in front of the serial number to equal 6 digits. Select OK.



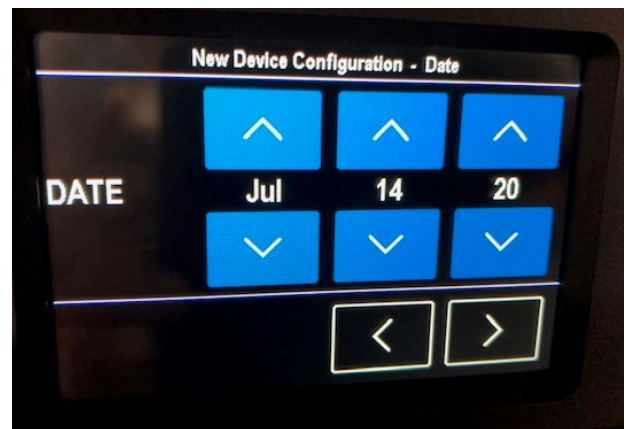
## Step 5

Toggle through the models using the up/down arrow buttons to select the correct dehumidifier model. If you are unsure which dehumidifier model to select, check the product or serial label. Select the right arrow when complete.



## Step 6

Configure the current time clock and date, using the up/down arrows. Select the right arrow when complete.

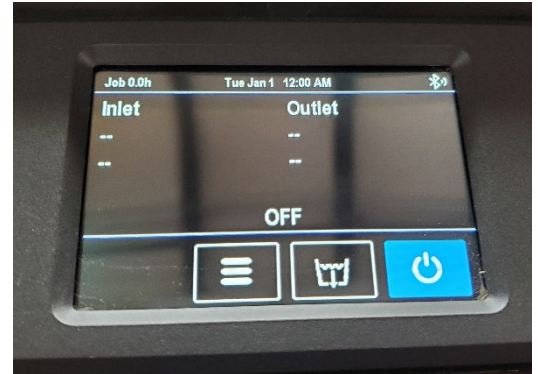


## Step 7

Once you have finished configuring the serial number, model, time and date, you will see the Home screen. The dehumidifier is ready to be powered on by pressing the Power button:



The Home screen displays inlet temperature/relative humidity (RH), outlet temp/RH, date, time, Bluetooth connection, and these operation buttons in the lower section: menu, purge and on/off.



**Your dehumidifier with its new Command Hub is now ready for use!**